

3 Bedroom Superior Penthouse

€698,500

LE CAPRICE, benahavis, Costa del Sol

Ref: ES.LEC.B205

RE/MAX Overseas is delighted to present to you this beautiful property located within Le Caprice, an exclusive residential development in Benahavis comprising just 14 homes in which design and natural light are the outstanding characteristics. To live in a new luxury home at The Westin La Quinta Golf Resort & Spa is a privilege only a few can enjoy. This south-west facing penthouse has spectacular views over the golf course and the Mediterranean coastline. The residential development and the golf course are perfectly integrated into the surrounding natural environment that forms part of one of the most exclusive areas of the Costa del Sol. •Duplex Penthouse •Fantastic ocean and golf views •Close to Beach --3 Spacious Bedrooms-- •2 Bathrooms-- •2 Private Garage Parking Spaces-- •Lar...

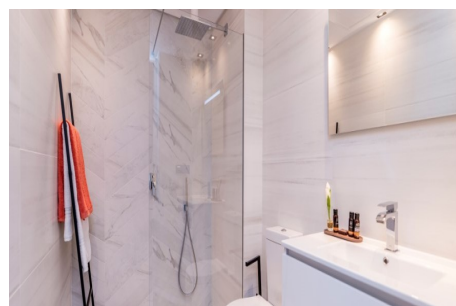
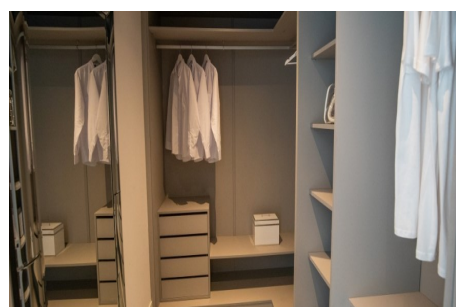
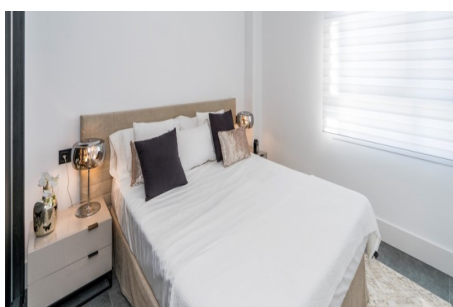
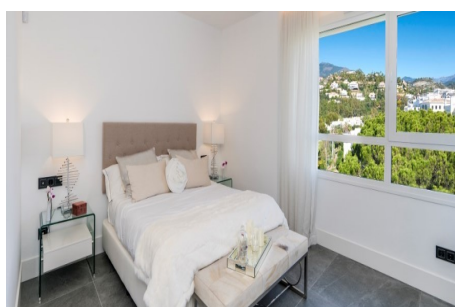
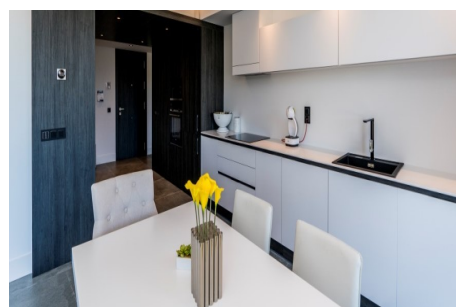
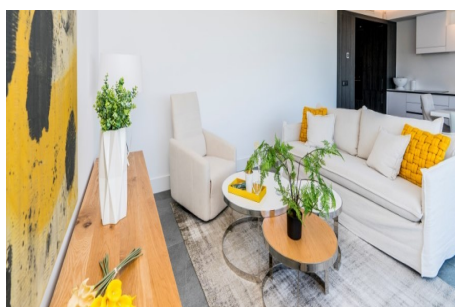
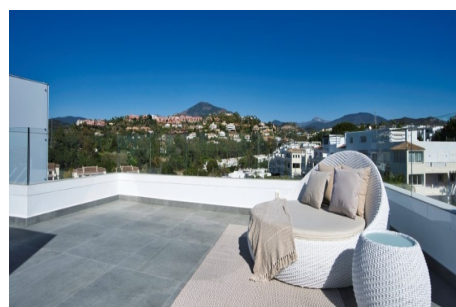
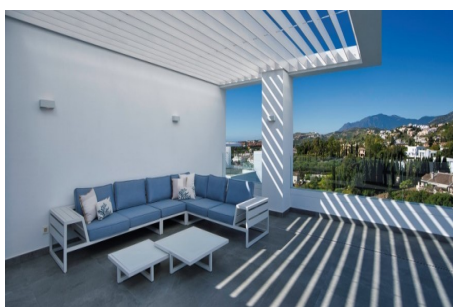
Telephone: +44 (0)330 053 6912

Email: overseas@remax.uk

RE/MAX Overseas 10 King Street Wolverhampton WV1 1ST United Kingdom

RE/MAX
England & Wales
OVERSEAS

Gallery



Telephone: +44 (0)330 053 6912

Email: overseas@remax.uk

RE/MAX Overseas 10 King Street Wolverhampton WV1 1ST United Kingdom

RE/MAX
England & Wales
OVERSEAS

Property Description

Location: benahavis, Costa del Sol, spain

RE/MAX Overseas is delighted to present to you this beautiful property located within Le Caprice, an exclusive residential development in Benahavis comprising just 14 homes in which design and natural light are the outstanding characteristics. To live in a new luxury home at The Westin La Quinta Golf Resort & Spa is a privilege only a few can enjoy.

This south-west facing penthouse has spectacular views over the golf course and the Mediterranean coastline. The residential development and the golf course are perfectly integrated into the surrounding natural environment that forms part of one of the most exclusive areas of the Costa del Sol.

•Duplex Penthouse •Fantastic ocean and golf views •Close to Beach --3 Spacious Bedrooms-- •2 Bathrooms-- • 2 Private Garage Parking Spaces-- • Large Private Terrace •Solarium -- • 'B' Rated Energy Certificate • Thermal and Acoustic Insulation-- • Ceramic Flooring-- • Fully Fitted Modern Kitchen-- • Top Quality Appliances • Designer Bathroom-- • LED Lighting-- • Air Conditioning-- • Solar Panels-- • Natural Ventilation System-- • Storeroom

-

Telephone: +44 (0)330 053 6912

Email: overseas@remax.uk

RE/MAX Overseas 10 King Street Wolverhampton WV1 1ST United Kingdom

RE/MAX
England & Wales
OVERSEAS

Additional Info

For Sale	Beds: 3	Baths: 2
Type: Apartment	Area: 285 sq m	Views Over Golf Course
Landscaped Gardens	Swimming Pools	Security Access
South West Facing	Gourmet Restaurants	Cocktail Bars
Water Sports	Golf Courses	

FloorPlans



Telephone: +44 (0)330 053 6912

Email: overseas@remax.uk

RE/MAX Overseas 10 King Street Wolverhampton WV1 1ST United Kingdom

RE/MAX
England & Wales
OVERSEAS