



## 3 Bedroom Luxury Apartment

**€630,000**

**Marbella Club Hills, Benahavis, Costa del Sol**

**Ref: ES.MCH.7GFA3**

Marbella Club Hills will be developed into an elegantly designed residential community, which will include 16 Semi-Detached Villas with 4 bedrooms and 110 Villa Apartments with 2 to 4 bedrooms ranging in size from 104 to 224 square meters; in addition to spacious terraces and gardens. The property on which Marbella Club Hills will be built, has an area of 158,000 square meters. It is 10 minutes away from Puerto Banús, 15 minutes from Marbella and just 45 minutes from both Malaga and Gibraltar airports. Tailored to the Marbella Club standards, Villarroel-Torrico Architects developed an exquisite design that is modern with an Andalusian touch.

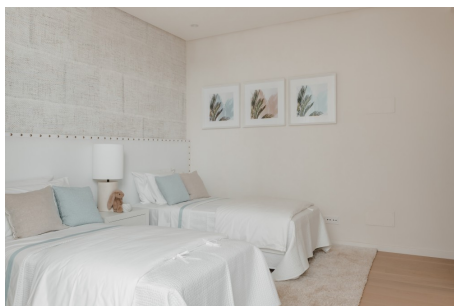
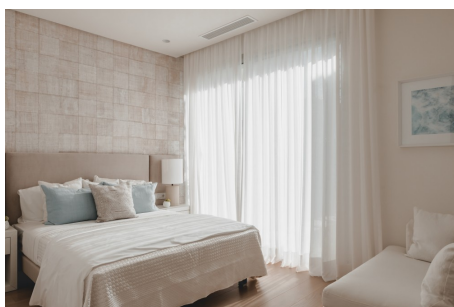
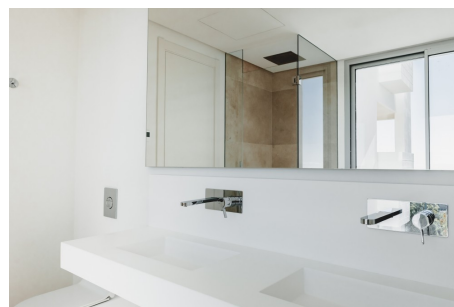
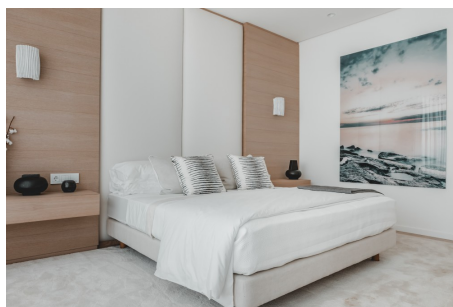
Telephone: +44 (0)330 053 6912

Email: [overseas@remax.uk](mailto:overseas@remax.uk)

RE/MAX Overseas 10 King Street Wolverhampton WV1 1ST United Kingdom

**RE/MAX**  
England & Wales  
*OVERSEAS*

# Gallery



Telephone: +44 (0)330 053 6912

Email: [overseas@remax.uk](mailto:overseas@remax.uk)

RE/MAX Overseas 10 King Street Wolverhampton WV1 1ST United Kingdom

**RE/MAX**  
England & Wales  
*OVERSEAS*

# Property Description

**Location:** Benahavis, Costa del Sol, Spain

Marbella Club Hills will be developed into an elegantly designed residential community, which will include 16 Semi-Detached Villas with 4 bedrooms and 110 Villa Apartments with 2 to 4 bedrooms ranging in size from 104 to 224 square meters; in addition to spacious terraces and gardens.



The property on which Marbella Club Hills will be built, has an area of 158,000 square meters. It is 10 minutes away from Puerto Banús, 15 minutes from Marbella and just 45 minutes from both Malaga and Gibraltar airports.

Tailored to the Marbella Club standards, Villarroel-Torrico Architects developed an exquisite design that is modern with an Andalusian touch.

---

Telephone: +44 (0)330 053 6912

Email: [overseas@remax.uk](mailto:overseas@remax.uk)

RE/MAX Overseas 10 King Street Wolverhampton WV1 1ST United Kingdom



# Additional Info

For Sale	Beds: 3	Baths: 3
Type: Apartment	Area: 245 sq m	Ground Floor
Secured Gated Community	Sea Views	Private Swimming Pools
Private Gardens	Access to Golf Courses	Residents Gym
Equestrian Centre	Tennis Club	Kids Playground
Concierge Services		