

## 7 Bed Classic Villa

Galapager, Madrid

€907,000

Ref: SP.MA.7BV

RE /MAX presents this fantastic individual villa built on the highest level of a plot of 4,348 m<sup>2</sup> with a very careful garden and that allows you to enjoy maximum privacy. It has a wonderful pool of about 100m<sup>2</sup> in the shape of a kidney, hammock area and toilets. It is the ideal place to enjoy great tranquility and privacy. It is a house of 916 m<sup>2</sup> very comfortable and comfortable, built with an unbeatable location and orientation. The main floor is accessed through an imposing double door of solid wood that leads to a large entrance hall of about 40m<sup>2</sup> with direct access to a bright and diaphanous living room of approximately 100 m<sup>2</sup>, with fireplace and large windows with spectacular views of the green areas and its mature forest with more than 100 trees that gives it total privacy in front of...

Telephone: +44 (0)330 053 6912

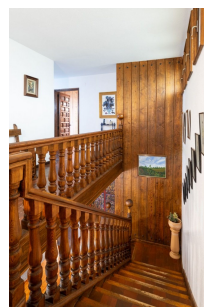
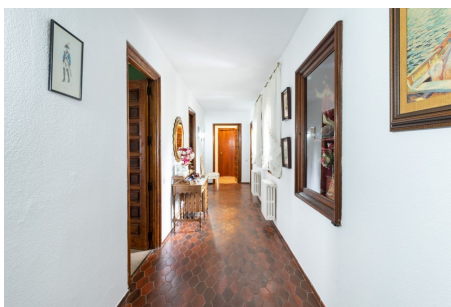
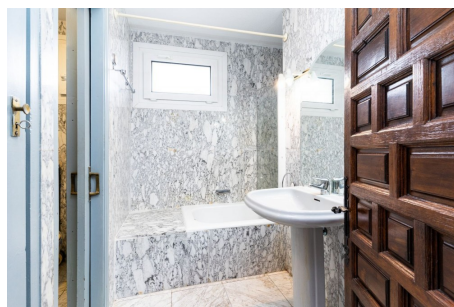
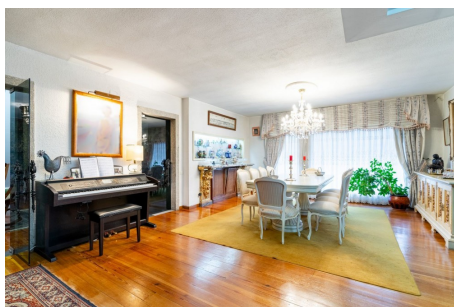
Email: [overseas@remax.uk](mailto:overseas@remax.uk)

RE/MAX Overseas 10 King Street Wolverhampton WV1 1ST United Kingdom

**RE/MAX**  
England & Wales  
*OVERSEAS*



# Gallery



Telephone: +44 (0)330 053 6912

Email: [overseas@remax.uk](mailto:overseas@remax.uk)

RE/MAX Overseas 10 King Street Wolverhampton WV1 1ST United Kingdom

**RE/MAX**  
England & Wales  
*OVERSEAS*

# Property Description

**Location:** Galapager, Madrid, Spain

**RE/MAX presents this fantastic individual villa built on the highest level of a plot of 4,348 m<sup>2</sup> with a very careful garden and that allows you to enjoy maximum privacy.** It has a wonderful pool of about 100m<sup>2</sup> in the shape of a kidney, hammock area and toilets. It is the ideal place to enjoy great tranquility and privacy. It is a house of 916 m<sup>2</sup> very comfortable and comfortable, built with an unbeatable location and orientation. The main floor is accessed through an imposing double door of solid wood that leads to a large entrance hall of about 40m<sup>2</sup> with direct access to a bright and diaphanous living room of approximately 100 m<sup>2</sup>, with fireplace and large windows with spectacular views of the green areas and its mature forest with more than 100 trees that gives it total privacy in front of the neighbors. On this same floor is the large kitchen with pantry and direct access to the garden. Courtesy toilet and a second beautiful living room-office of about 70m<sup>2</sup>. The second floor is distributed in 5 bedrooms all en Suite with their own wardrobes. On the same plot, there is built a beautiful wooden house of 84.53m<sup>2</sup> with living room, kitchen, 2 bedrooms and bathroom, which offers this property different opportunities. Garage for 2 cars, laundry area, children's play area, sports area and cellar of 54m<sup>2</sup>. The house has energy certificate A, pellet heating with great energy savings, and many improvements made over the years. Community expenses: 98? every two months. The proximity to the Golf Course, Equestrian and quick access to the A6 (600m) give a very privileged situation to this house.

Telephone: +44 (0)330 053 6912

Email: [overseas@remax.uk](mailto:overseas@remax.uk)

RE/MAX Overseas 10 King Street Wolverhampton WV1 1ST United Kingdom

**RE/MAX**  
England & Wales  
*OVERSEAS*

# Additional Info

For Sale	Beds: 7	Baths: 7
Type: Villa	Area: 916 sq m	Land Area: 4348 sq m
Garden	Privacy	Garage
Great Location	Swimming Pool	