

## Splendid 2 Bedroom Apartment

Glyfada, Attica

€2,250,000

Ref: GR.AT.2BA

Glyfada - Penthouse 3rd & 4th floor 251 sqm, luxurious two-storey corner Penthouse. The 3rd floor consists of 2 master bedrooms, open-plan living room, dining room, kitchen and guest WC. It has a large terrace with wooden floors and large sliding windows. The 4th floor with excellent views of the Saronic Gulf has a private green roof garden of 122 m2 and a swimming pool on the floor. This personal suite consists of a bedroom with a bathroom and cloakroom, a seating area and a kitchenette. Along with the apartment is also given an independent studio with an indoor bathroom and kitchenette. Warehouse and two parking spaces in the basement.

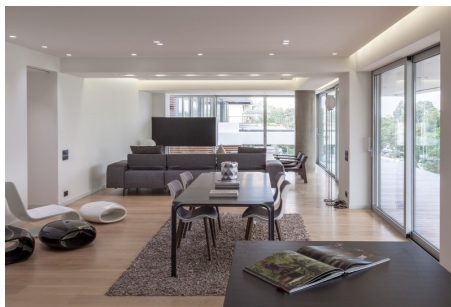
Telephone: +44 (0)330 053 6912

Email: [overseas@remax.uk](mailto:overseas@remax.uk)

RE/MAX Overseas 10 King Street Wolverhampton WV1 1ST United Kingdom

**RE/MAX**  
England & Wales  
*OVERSEAS*

# Gallery



Telephone: +44 (0)330 053 6912

Email: [overseas@remax.uk](mailto:overseas@remax.uk)

RE/MAX Overseas 10 King Street Wolverhampton WV1 1ST United Kingdom

**RE/MAX**  
England & Wales  
*OVERSEAS*

# Property Description

**Location:** Glyfada, Attica, greece

**Glyfada - Penthouse 3rd & 4th floor 251 sqm, luxurious two-storey corner Penthouse.** The 3rd floor consists of 2 master bedrooms, open-plan living room, dining room, kitchen and guest WC. It has a large terrace with wooden floors and large sliding windows. The 4th floor with excellent views of the Saronic Gulf has a private green roof garden of 122 m2 and a swimming pool on the floor. This personal suite consists of a bedroom with a bathroom and cloakroom, a seating area and a kitchenette. Along with the apartment is also given an independent studio with an indoor bathroom and kitchenette. Warehouse and two parking spaces in the basement.

---

Telephone: +44 (0)330 053 6912

Email: [overseas@remax.uk](mailto:overseas@remax.uk)

RE/MAX Overseas 10 King Street Wolverhampton WV1 1ST United Kingdom



# Additional Info

For Sale	Beds: 2	Baths: 3
Type: Apartment	Area: 250 sq m	Parking
Beautiful Sea View	Great Location	Swimming Pool
Elevator/Lift		