



2 Bedroom Apartment

Mandria Gardens, Mandria, Paphos

€325,000

Ref: CY.MAG.201/8

This 2 bedroom Garden Apartment in-Mandria-with its own private roof terrace and covered veranda is located on the outskirts of-Paphos-with close proximity to Paphos international airport. The property is ideal for permanent living or high letting potential.This Apartment features double glazed windows, granite kitchen surface, en-suite bathroom and upgraded bathroom finishes. This apartment benefits from spacious interior, easy access to the communal pool area and walking distance to the beach.

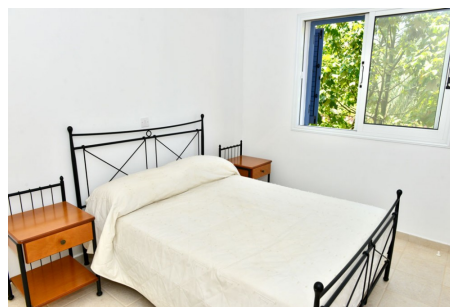
Telephone: +44 (0)330 053 6912

Email: overseas@remax.uk

RE/MAX Overseas 10 King Street Wolverhampton WV1 1ST United Kingdom

RE/MAX
England & Wales
OVERSEAS

Gallery



Telephone: +44 (0)330 053 6912

Email: overseas@remax.uk

RE/MAX Overseas 10 King Street Wolverhampton WV1 1ST United Kingdom

RE/MAX
England & Wales
OVERSEAS

Property Description

Location: Mandria, Paphos, cyprus

This 2 bedroom Garden Apartment in-Mandria-with its own private roof terrace and covered veranda is located on the outskirts of-Paphos-with close proximity to Paphos international airport. The property is ideal for permanent living or high letting potential.

This Apartment features double glazed windows, granite kitchen surface, en-suite bathroom and upgraded bathroom finishes. This apartment benefits from spacious interior, easy access to the communal pool area and walking distance to the beach.

Telephone: +44 (0)330 053 6912

Email: overseas@remax.uk

RE/MAX Overseas 10 King Street Wolverhampton WV1 1ST United Kingdom



Additional Info

For Sale	Beds: 2	Baths: 2
Type: Apartment	Area: 77 sq m	2nd Floor Apartment
Roof Terrace	Communal Pool	Fully Fitted Kitchen
Fitted Wardrobes	Close to the Beach	Close to Golf Resorts
Close to Local Amenities	Close to the Airport	