



Limassol Blu Marine

Limassol, Limassol

€795,000

Ref: CY.BLM.0000

Europe's New RivieraBlu Marine is a first class freehold investment opportunity with an upside outlook. 330 meters from the Limassol Marina, in the heart of everything in Limassol's downtown and surrounded by billions worth infrastructure investments-this area will change the face and status of Cyprus and drive the economy for-years to come. Inspirational Master PlannedBlu Marine designed and master plan embodies the international experience of world renown UK architects and engineers Benoy and BurroHapold as well as Leptos Group's local expertise and experience in developing extraordinary destinations with global appeal. The design is inspired and very much celebrates Blu Marines seafront vibrant location in the heart of everything. Uncompromised Sea Views The articulated residential towers...

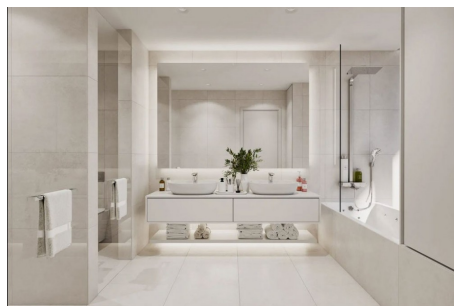
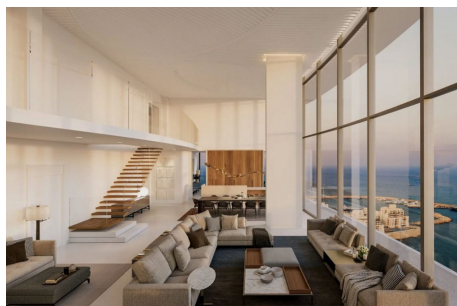
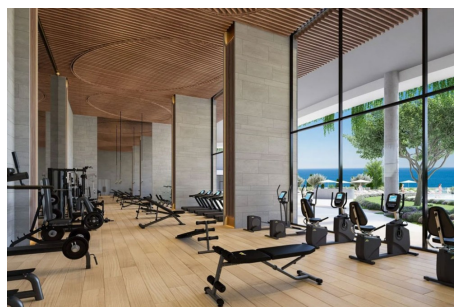
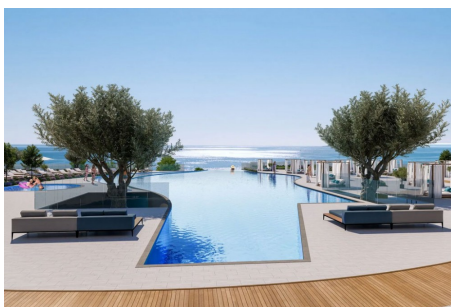
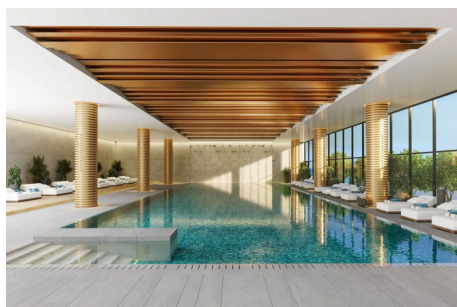
Telephone: +44 (0)330 053 6912

Email: overseas@remax.uk

RE/MAX Overseas 10 King Street Wolverhampton WV1 1ST United Kingdom

RE/MAX
England & Wales
OVERSEAS

Gallery



Telephone: +44 (0)330 053 6912

Email: overseas@remax.uk

RE/MAX Overseas 10 King Street Wolverhampton WV1 1ST United Kingdom

RE/MAX
England & Wales
OVERSEAS

Property Description

Location: Limassol, Limassol, cyprus

Europe's New Riviera

Blu Marine is a first class freehold investment opportunity with an upside outlook.

330 meters from the Limassol Marina, in the heart of everything in Limassol's downtown and surrounded by billions worth infrastructure investments-this area will change the face and status of Cyprus and drive the economy for-years to come.

Inspirationally Master Planned

Blu Marine designed and master plan embodies the international experience of world renown UK architects and engineers Benoy and BurroHapold as well as Leptos Group's local expertise and experience in developing extraordinary destinations with global appeal. The design is inspired and very much celebrates Blu Marines seafront vibrant location in the heart of everything.

Uncompromised Sea Views

The articulated residential towers rising above the podium allow all residences the finest city and Mediterranean views.

World Class Services & Facilities

A wealth of world class facilities spread within 13,000 sqm alongside 24hr concierge services, housekeeping, property and rental management services will cater for every need.

Telephone: +44 (0)330 053 6912

Email: overseas@remax.uk

RE/MAX Overseas 10 King Street Wolverhampton WV1 1ST United Kingdom

RE/MAX
England & Wales
OVERSEAS

Additional Info

For Sale	Beds: 1	Baths: 1
Type: New Development	Breathtaking Sea Views	Water Front Living
High-end Luxury Apartments	Concierge Services	Resident's Outdoor Pool
Modern Gym	Heated Indoor Pool	Resident's Spa Centre
Bistro & Restaurant	Car Park	Children's Play Area